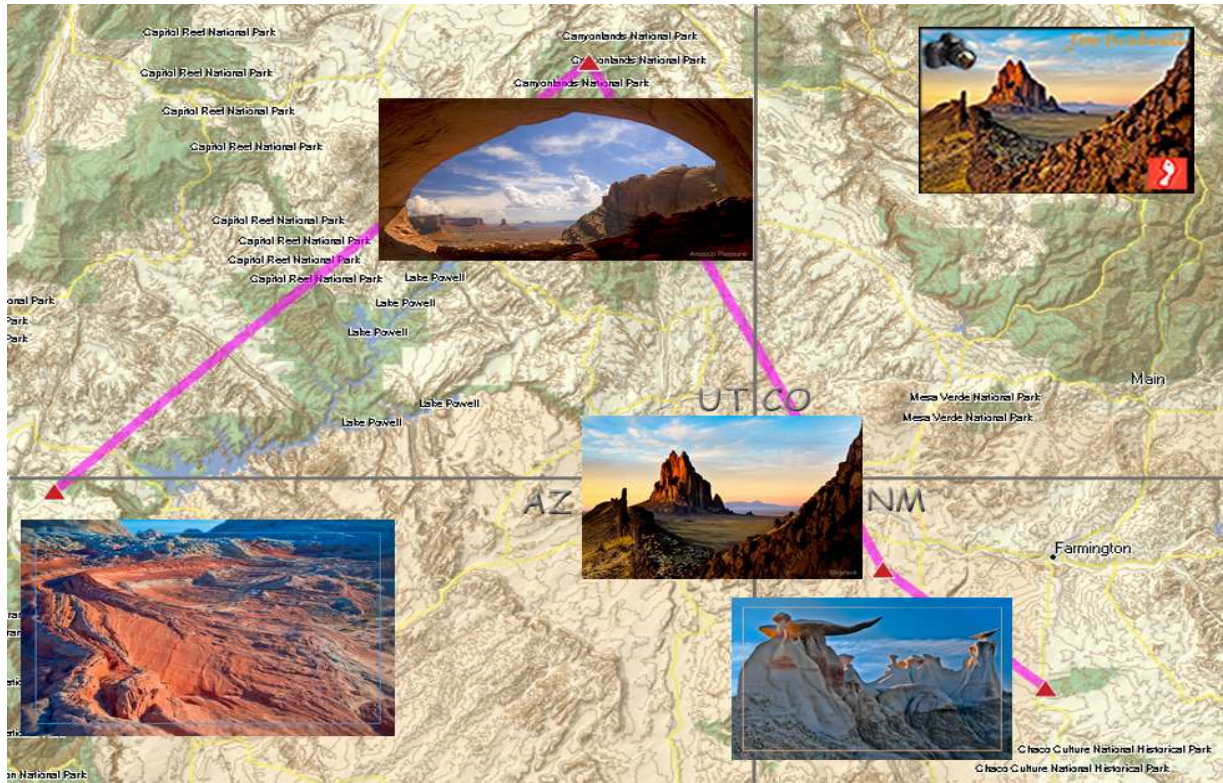


Creating a Google Earth Tour

What would major adventure tour leaders and professional nature and landscape photographers like to learn? How to fascinate their audience with dynamic videos of real earth scenes, images, sound, and stories...

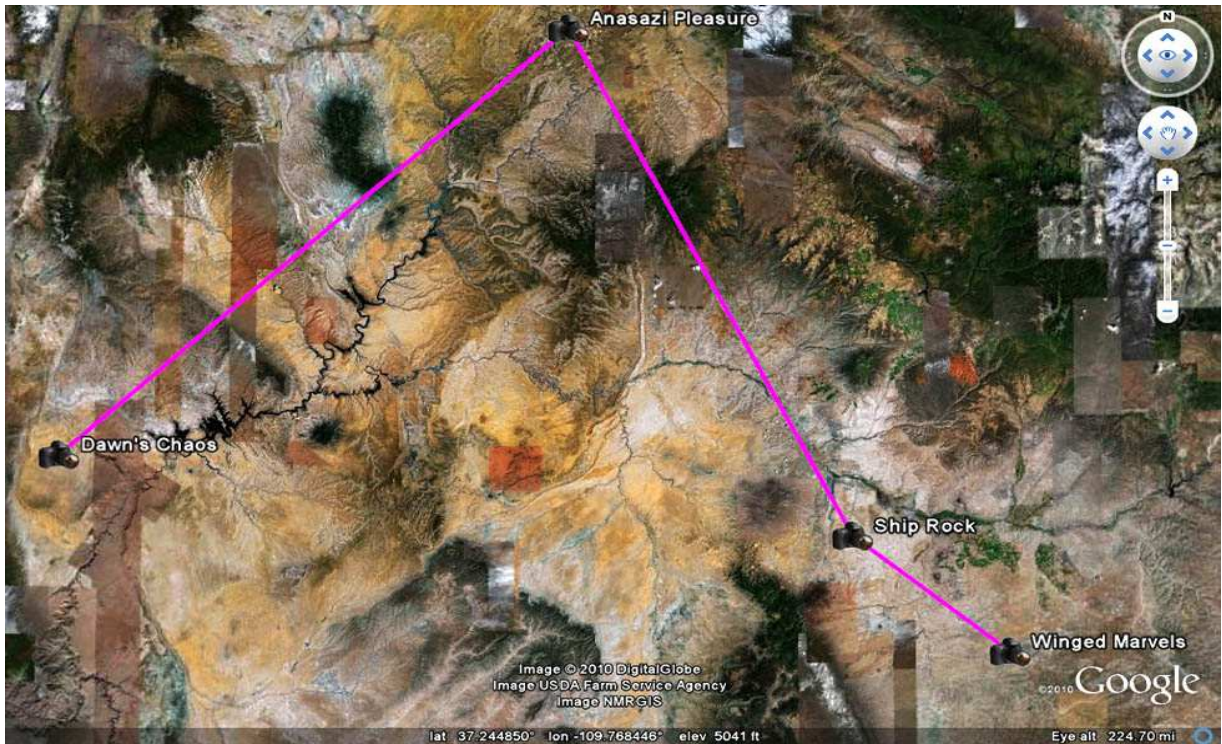


My Passion ~ trekking wild outback to capture iconic, award-winning images at Magic Hour!

Here's a tool which provides safety and insight in such treks. Mapsource is software provided by Garmin for managing a hand-held global positioning system GPS device. Each triangle is a waypoint. The connecting line is a route. The map is flat, but shows a faint topographic replica. The images were captured at or near each waypoint. You can think of this paradigm as a static, flat earth...

Google Earth is a geo-browser which shows satellite terrain data. With GE, our paradigm starts to shift. Our eye becomes a virtual camera. In GE, we can put this camera where ever we wish, when we want. We can even simulate time of day. Such elements of change titillate our anticipation...

Our next image shows the same Four Corners region, sw United States. The difference ~ we see a remarkable collage of terrain data from 225 miles above the northern Colorado Plateau. We added Placemark Icons to enhance the route and provide a more personalized touch. But, that's a rather static starting point...



Monument Valley (center) and Mesa Verde (center right) [red].
 The San Juan river lies between Mesa Verde and Monument Valley. Colorado River enters image top center and exits bottom left in the Grand Canyon.



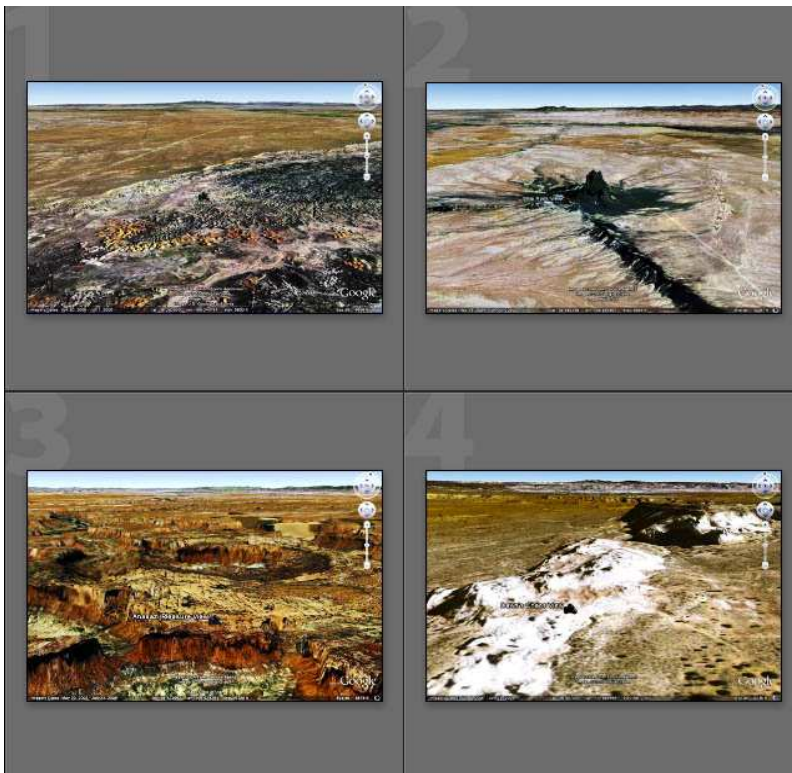
To personalize, we added award-winning images and logo on our GE View.

OOPs - although we are dealing with satellites, terrain, and images, we are still limited to a flat earth at this point in our Google Earth dynamic tour discussion.

Present professional photographers and tour leaders use static mode as they plan tours and create GPS routes. With GE, they can provide definite enhancement of real interactive terrain when they want go on a trek.

NOW

Google Earth Tours can elevate this paradigm from static to dynamic.



Let's stay static to start our explanation.

Each screen shot is taken from a different GE view.

1. Bisti
2. Ship Rock
3. Canyonlands
4. Paria Plateau

The trick - maneuver your virtual camera in GE to capture a view of real terrain at each outback scene.

You say, "Damn, that's a marvelous way for me to preplan my trips to that fascinating country!"

You go that **RIGHT**...

You demand, "I'm really tired of this static crap. Show me some *videos*..."

Google Earth Tours

Version 5.2 provides a neat trick.

If you create waypoints in Mapsource then connect to a route, you can show it in GE superimposed on terrain data. You will get high altitude shots where you use navigation controls to position the entire project.

You can copy each static high altitude shot, creating another Placemark. BTW, a waypoint in GPS terms is a Placemark in GE terms.

I chose a simple tour through Bisti, Ship Rock, Canyonlands, to Paria Plateau.

Navigating to Outback View

GE's Navigation Tools, **Look**, **Move**, and **Zoom** transform any GE view to your own personal view. Simply choose the new Placemark in Places Panel, arrange each view as you like it, then right-click to see Snapshot View, and click. That view becomes a Placemark property.

I suggest you download GE and play with these controls until they become you willing slaves... it's a great exercise for creating outstanding videos.

In minutes, Bisti View - Paria View were created. Hey, we've got all basic elements of a great video - Images, Waypoints-Placemarks, Routes, and Views.

Creating a Google Earth Tour

Your Places Panel contains enough elements for a simple video.

In the Options Bar, click on Camera Icon (Record a Tour).

You get a box with red dot and microphone. The microphone is for more advanced tour creation - you tell a story as the video is being created.

When you click the red dot, recording begins...

Timing is tricky - you probably want an overview first. I mentally count off time then double-click on a View Placemark (e.g., Bisti) Places Panel. GE takes camera from first view to Bisti. Again I count; when I click Ship Rock, we move on...

When all Placemarks done, its time to close the video, name it, and save on your HD. If you want it available for presentations, simply upload to your web site. Sending URL to others lets them play it at their leisure...

Google Earth Tours

This is a rather simple tour - no fancy Placemark Balloons, no images, no story telling. For *that* level of GET, you must dig into KML, the geo-browser language which underlies GE.

Rewards: your video can have precise timing, show images, sound, and narration!

You must have Google Earth v 5.2 or greater installed on your computer to play any GE Video...

Try this video at <http://www.geocompa.com/kml/GoogleEarthTours-rec.kmz>

After viewing, you exclaim, *"This video stuff using free GE Tours is a very exciting, dynamic way to market Images, Tours, and Workshops... What's NEXT?"*

©2010 Chopawamsic LC, geocomp@geocompa.com, www.PathwaysofLight.blogspot.com