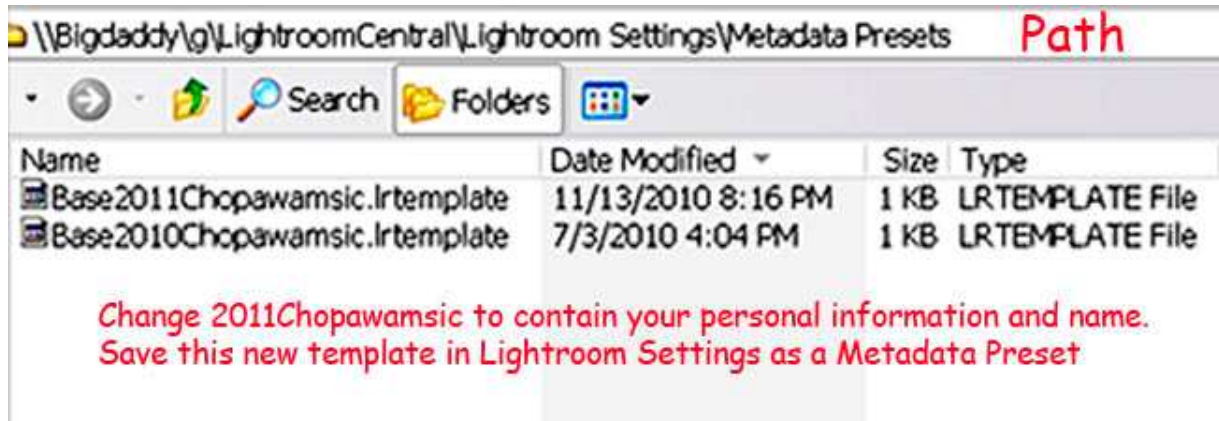


## Getting Your Copyright into Lightroom

Here's a copyright template for Lightroom. Note - it's called .lrtemplate and can only be read by Lightroom.

Let's translate the path:



Bigdaddy is a 2 TB external drive.

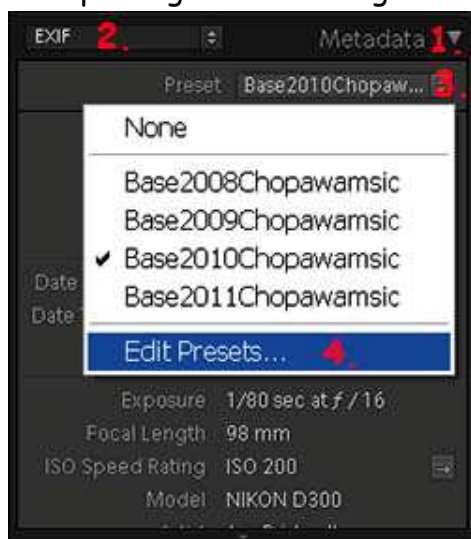
It's called drive G.

In Lightroom central catalog folder, there's a subfolder Lightroom Settings. Below that, there is another folder Metadata Presets.

Within your new central Lightroom catalog, it's stored in LightroomSettings/MetadataPresets. You created new Lightroom catalog on your desktop following instructions in RawCF\_to\_CentralCatalog hand out.

Open Lightroom. Drag and drop the supplied Preset into appropriate Metadata Presets subfolder in LightroomCentral catalog.

Now, you're ready to change to your own brand.



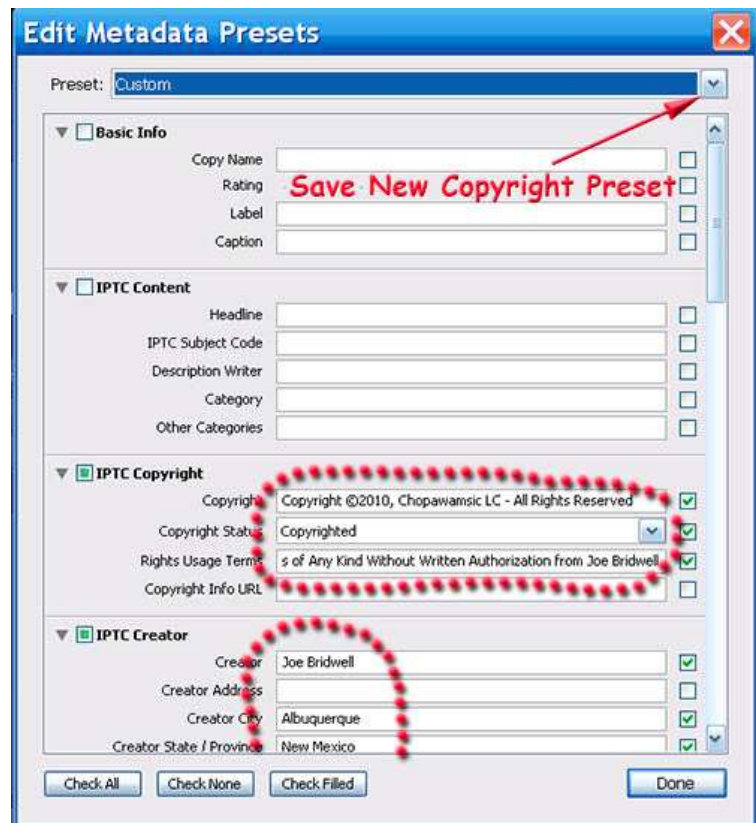
Here's metadata path in Library module.

1. Click flippy triangle to right of the number to open Metadata subpanel.
2. Make sure subpanel is showing EXIF data.
3. Click drop-down menu for Preset.
4. Click Edit Presets...

Here's the Edit can't dialog box.

1. Under IPTC Copyright, change this information to your personal information.
2. Under IPTC creator and all subsequent fields, create your own personal data.
3. When you're done, click custom drop-down and save new Copyright information as a preset name the way you want to name it.

Now, each time you bring up Lightroom, and want to import raw files, Lightroom will supply that template to each individual raw file.



© 2011 Chopawamsic LC, [geocomp@geocompa.com](mailto:geocomp@geocompa.com), [www.PathwaysofLight.blogspot.com](http://www.PathwaysofLight.blogspot.com)