

## Joe's External Hard Drive LR3 Catalog System

In my life, I've learned different people think different ways. Even so, it helps to look at how someone designs their central catalog system using Lightroom.

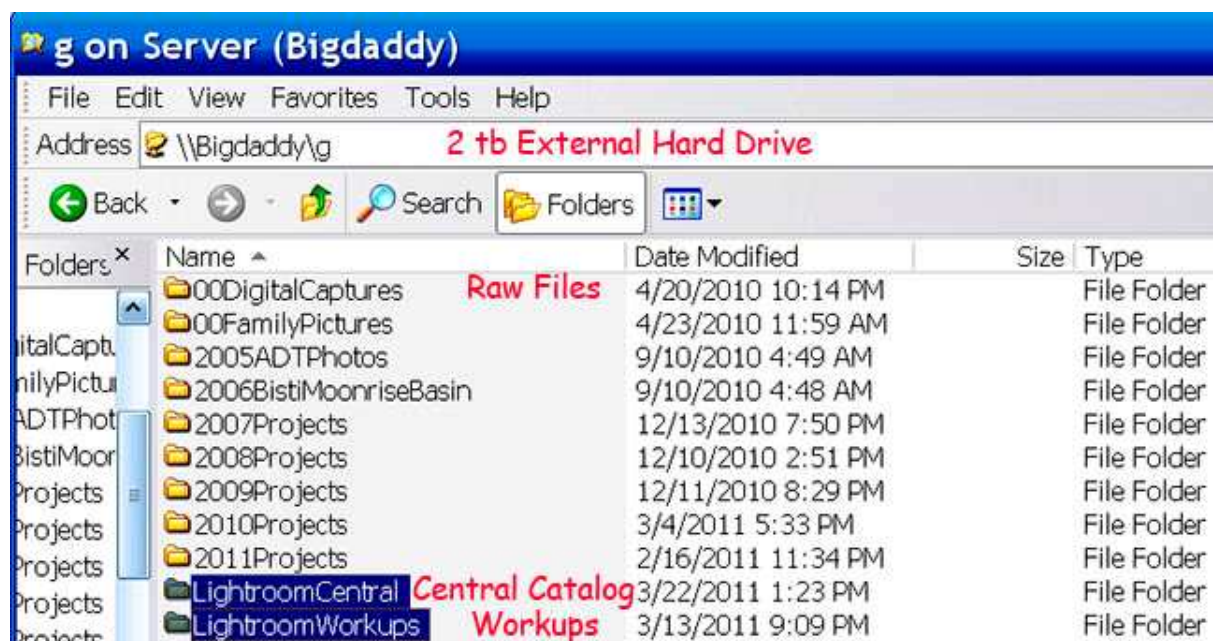
In my case, I have a 2 TB external drive containing a central catalog. That drive is accessible over an Ethernet network to laptop and studio computers.

That central catalog is my 'eye' - at any given time, I may need to look across 4 TB of drive space to find a given image. So, it really helps to preplan an organization, then stick to it!

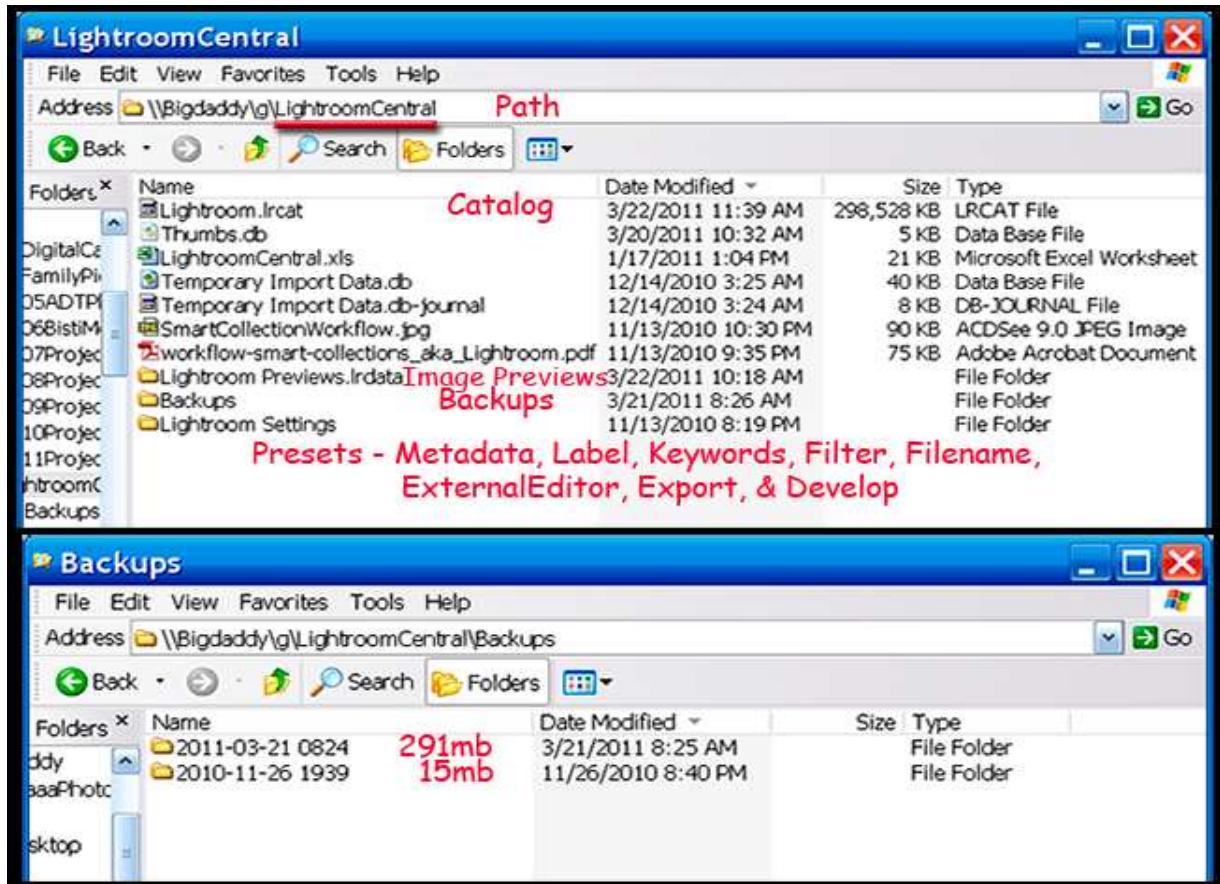
|  |   |
|--|---|
| LightroomCentral.....                          | 2 |
| LightroomWorkups.....                          | 3 |
| LightroomWorkups is much more complicated..... | 4 |
| Your Choices.....                              | 4 |

I was a geologist before I was a photographer. So part of my brain is branded with year/month/date followed by a place-name. 2006/20060807BistiMoonrise tells me I was in the Bisti August, 2006 - shooting moonrise. The thing about this pattern is, it's now a very deep part of my DNA.

So I'd be well advised to use DNA, but learn how to talk to Lightroom's catalog that same way. Let me introduce Bigdaddy... where I keep all my raw files in OODigitalCaptures. I recently built LightroomCentral to contain the central catalog. Then I began to populate LightroomWorkups with images etc..



## LightroomCentral



Now, here's where the rubber *really* meets the road...

I have broken out different terms within LightroomCentral. There's the Catalog, Image Previews, Backups, and Lightroom settings.

Although each has a specific function, I want to call attention to Backups. I have Lightroom set up to back up every time I make any kind of a change to anything in the way of my photography. Clearly, if I've spent time on it I want to be able to recover it.

As you look at the Backups folder, you'll see I've been working on it for about four months. In that time, I've gone from a 15 MB catalog to a 300 MB catalog.

If you let it, Lightroom is content to create a brand-new catalog at about a 300 MB anchorman in size - even when I only changed 2 photos, 5 keywords, and a copyright.

But, you don't have unlimited hard drive space - unless your name is *Croesus*. So, be aware of how your Backups folder is accumulating information and remove it weekly!

## LightroomWorkups

LightroomWorkups

File Edit View Favorites Tools Help

Address \\Bigdaddy\g\LightroomWorkups Path Go

Back Search Folders

| Name              | Date Modified      | Size | Type        |
|-------------------|--------------------|------|-------------|
| 2011              | 3/20/2011 7:44 AM  |      | File Folder |
| 2008              | 2/24/2011 11:29 AM |      | File Folder |
| 2005              | 2/18/2011 10:09 AM |      | File Folder |
| 2010              | 2/10/2011 10:13 AM |      | File Folder |
| GoogleEarthImages | 1/26/2011 6:46 PM  |      | File Folder |
| Videos            | 1/25/2011 8:12 PM  |      | File Folder |
| 2009              | 1/15/2011 6:37 PM  |      | File Folder |
| 2007              | 12/13/2010 9:53 PM |      | File Folder |
| 2006              | 12/6/2010 8:52 PM  |      | File Folder |

I keep raw, tif, jpg files here. These are the workups for clients, publication, competition, etc

---

2011

File Edit View Favorites Tools Help

Address \\Bigdaddy\g\LightroomWorkups\2011 Path Go

Back Search Folders

| Name                        | Date Modified      | Size | Type        |
|-----------------------------|--------------------|------|-------------|
| 2011LR3WKS                  | 3/22/2011 11:48 AM |      | File Folder |
| 2011WPRReturn               | 3/21/2011 8:47 PM  |      | File Folder |
| 2011ArtisticImage           | 3/21/2011 8:43 PM  |      | File Folder |
| 2011FromRAW_to_FineArtImage | 3/20/2011 6:21 PM  |      | File Folder |
| zLaptopIcons                | 3/20/2011 10:32 AM |      | File Folder |
| 2011MesaVerdeWorld          | 3/20/2011 7:47 AM  |      | File Folder |
| LR3Workflows-Plans          | 3/17/2011 7:20 AM  |      | File Folder |
| LR3MainCatalog              | 3/17/2011 7:16 AM  |      | File Folder |
| LightroomShortcuts          | 3/17/2011 7:14 AM  |      | File Folder |
| 2011Yei-be-Chei             | 3/17/2011 7:14 AM  |      | File Folder |
| 2011PrimordialBisti-II      | 3/16/2011 9:07 AM  |      | File Folder |
| 2011LR3Prints               | 3/13/2011 2:00 PM  |      | File Folder |
| 2011PrimordialBisti         | 3/12/2011 2:44 PM  |      | File Folder |
| 2011-LR3Workshops-Print     | 3/4/2011 7:24 AM   |      | File Folder |
| 2011LR3Binders              | 3/3/2011 10:00 AM  |      | File Folder |
| LuminanceMasks              | 2/28/2011 3:55 PM  |      | File Folder |
| 2010-11ELCC-Final           | 2/22/2011 1:32 PM  |      | File Folder |
| 2011SmugmugReDo             | 2/22/2011 9:07 AM  |      | File Folder |
| 2011Photoshop-CDCover       | 2/22/2011 8:08 AM  |      | File Folder |
| 2011AppleMacBookProKeyboard | 2/22/2011 8:08 AM  |      | File Folder |
| VideoReaderSpecs            | 2/18/2011 10:09 AM |      | File Folder |
| 2011LR3Videos               | 2/10/2011 2:33 PM  |      | File Folder |
| 2011PattySchwartz           | 1/27/2011 12:13 PM |      | File Folder |
| 2011-13019iTunesError       | 1/25/2011 2:13 PM  |      | File Folder |

## LightroomWorkups is much more complicated...

The path tells me it's a folder on Bigdaddy (drive G) on my present system.

For subfolders, I name them by year. Occasionally, I'll actually put a topic name in the subfolder name as well.

So, let's open 2011.

Now I don't know about you, but I do things one thing at a time. Physically that means I'm going to have a different catalog at least every month. As you can see from the catalog titles, it might be making a workshop, selling an image, a problem with iTunes, are just whatever my brain comes up with...

I'll bet you're the same!

But here's the key...

Stored within each of those 24 folders are *all* the files (raw, tiff, JPEG, doc, XLS, PDF) I create to handle working up photos, preparing prints for clients, tone mapping an image until it's ready for juried competition, preparing and teaching workshops, writing articles, etc. Experience has taught me I have no idea what I'll have all my plate next year.

But, what I do know beyond a shadow of a doubt!

I won't be able to pull any of this information back to mind in less than five minutes UNLESS it's skillfully cataloged. For example, Patty and I were dickering over a Ship Rock sale for about a year. She wanted to see all of her options before she purchased. So there are a number of images in Lightroom specifically designed for learning Patty's taste.

## Your Choices...

This is catalog system the outline for how my brain is wired.

If your brain is wired a different way, then you need to look at these ideas, take what's valuable to you, change them, and come up with your own interpretation.

One thing I can say - Lightroom is very robust. If you study either Kelby or these workshops, I think you can easily create your own Lightroom catalogs!

BEWARE - it takes way more patience than brains!

*©2011 Chopawamsic LC, [geocomp@geocompa.com](mailto:geocomp@geocompa.com), [www.PathwaysofLight.blogspot.com](http://www.PathwaysofLight.blogspot.com)*